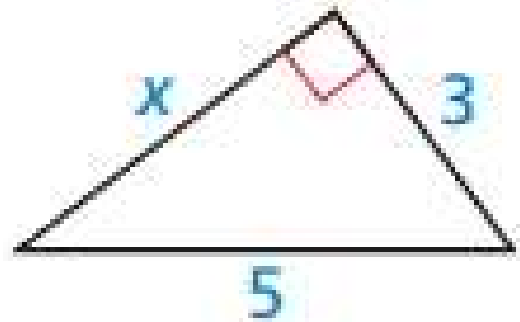
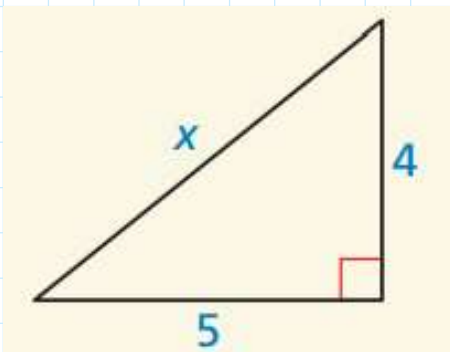
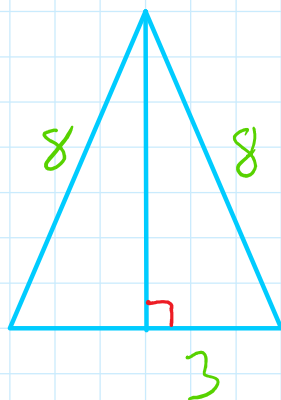


9.1-9.2 Quiz Review

Find the value of x



Find the area of the isosceles triangle.

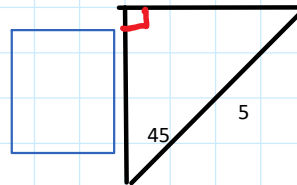
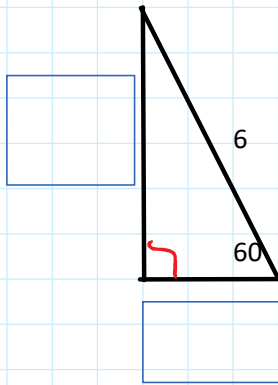


Is the triangle with the segment lengths *acute*, *right* or *obtuse*?

3, 4, 6

2.1, 2.8, 3.5

Label each side length. Write your final answer in simplest form in the box.



The End
11 Questions
Notecard allowed!
GOOD LUCK

Practice sec 9.2 pg.

475: 4-10EE, 11,
12-16EE
