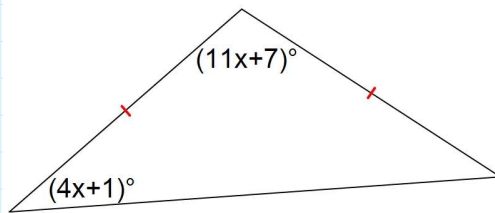
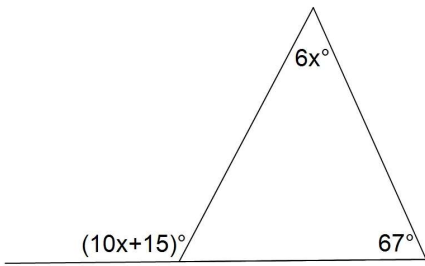
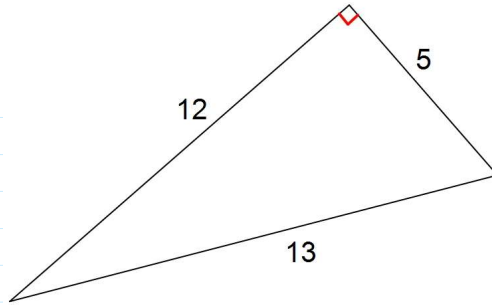
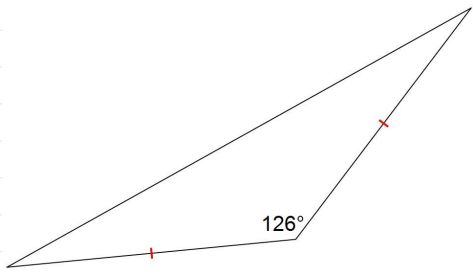


Test Review!

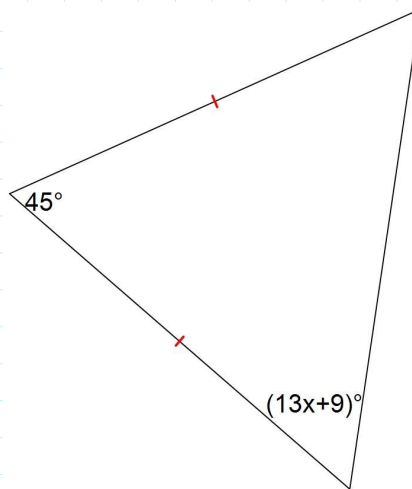
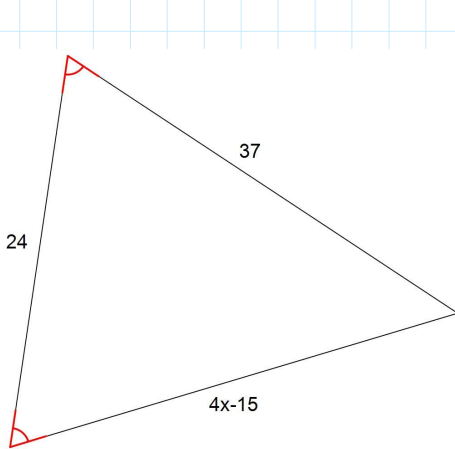
Find the measures of the angles



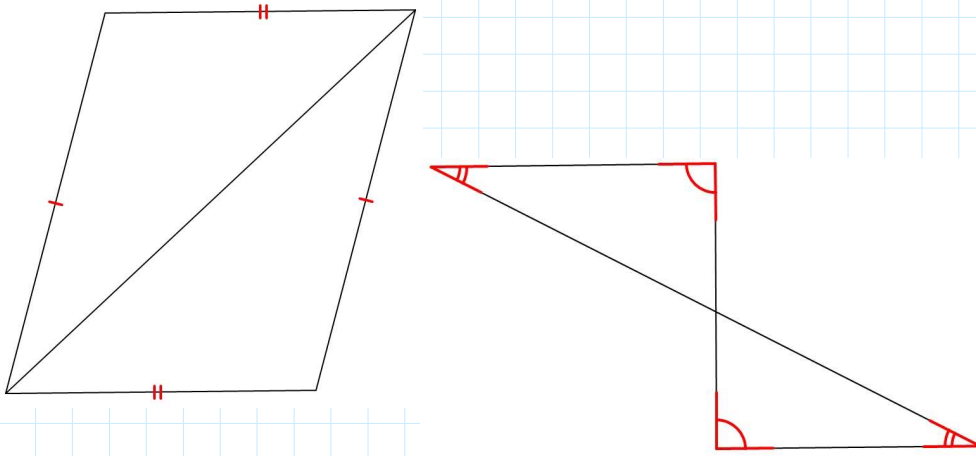
Classifying triangles



Solving for x



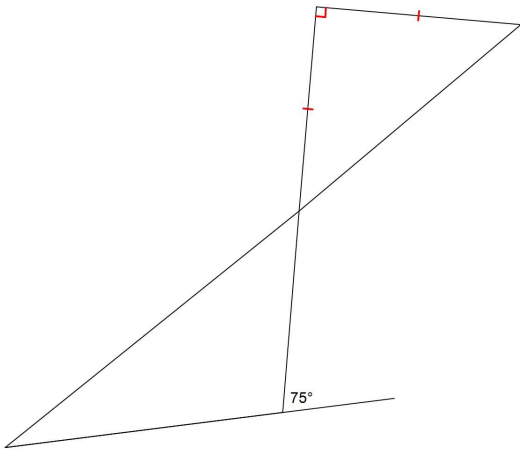
Congruent or not, what information is needed?



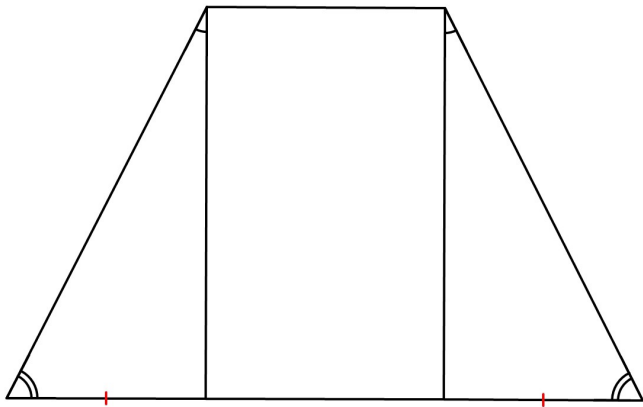
Word Problems

One of the acute angles of an obtuse triangle is ten more than the other acute angle while the obtuse angle is three times the smallest acute angle. Find the measures of the three angles.

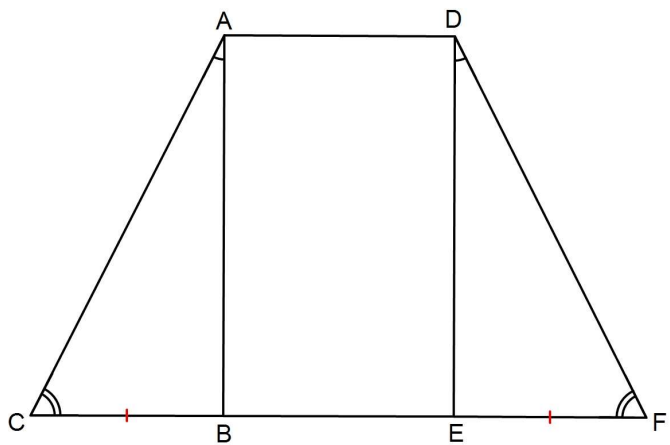
Find the missing angle measurements.



Are the triangles congruent? If so say what theorem, if not just put not congruent.



Proof:
 Prove $\overline{AC} \cong \overline{DF}$



24 questions total. Study!!!!
